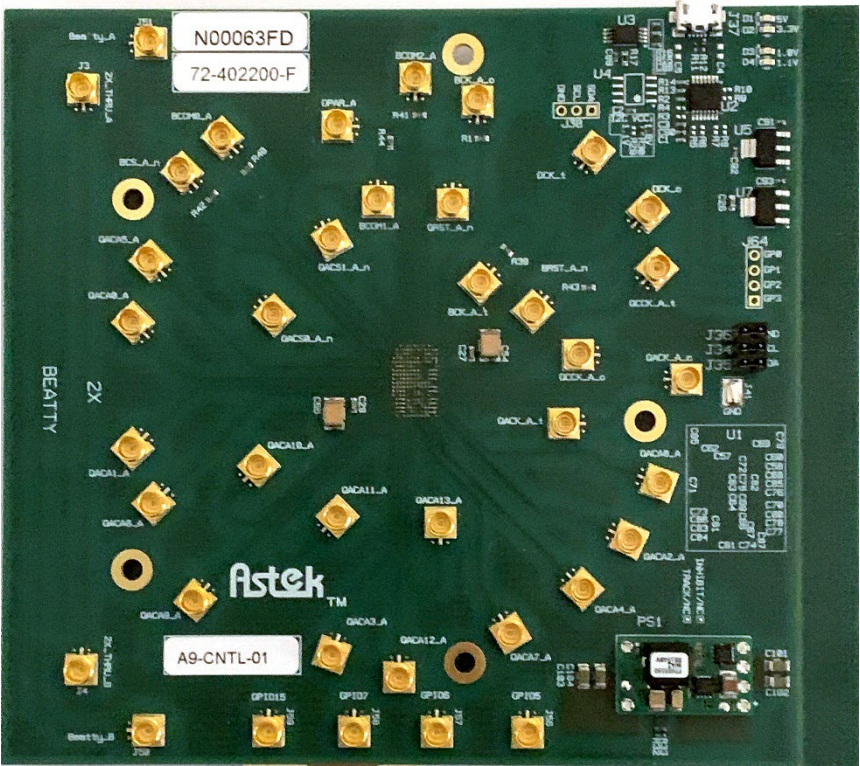


A9-CONTROLLER

Product Brief



DDR5 CONTROLLER BOARD

The DDR5 Controller Board provides DRAM testing signals. Utilizing the Virtual Host Mode (VHOST) of the Registering Clock Driver (RCD), the Controller Board provides CA, CS_n, BCOM, BCS_n and Clock signals to the device under test. In addition, the A9-Controller Software package included with the Controller Board provides a command line interface to issue test sequences to the device under test.

Features

- Issues DRAM commands to CA using RCD VHOST mode
- Interface directly to A9-CTC2 via SMP to SMP cables

Configuration

- A9-CNTRL-01 Controller Board
- A9-CTC DDR5 Single-Slot RDIMM CTC2 Board
- 18 SMP to SMP cables for CA signals
- 2 SMP to SMP cables (match pair) for Clock output

Ordering Information

| Model Number | Product Description |
|--------------|---------------------|
| A9-CNTL-01 | Controller Board |

For more information, contact your Keysight sales representative or visit the Astek web site at:
www.astekcorp.com